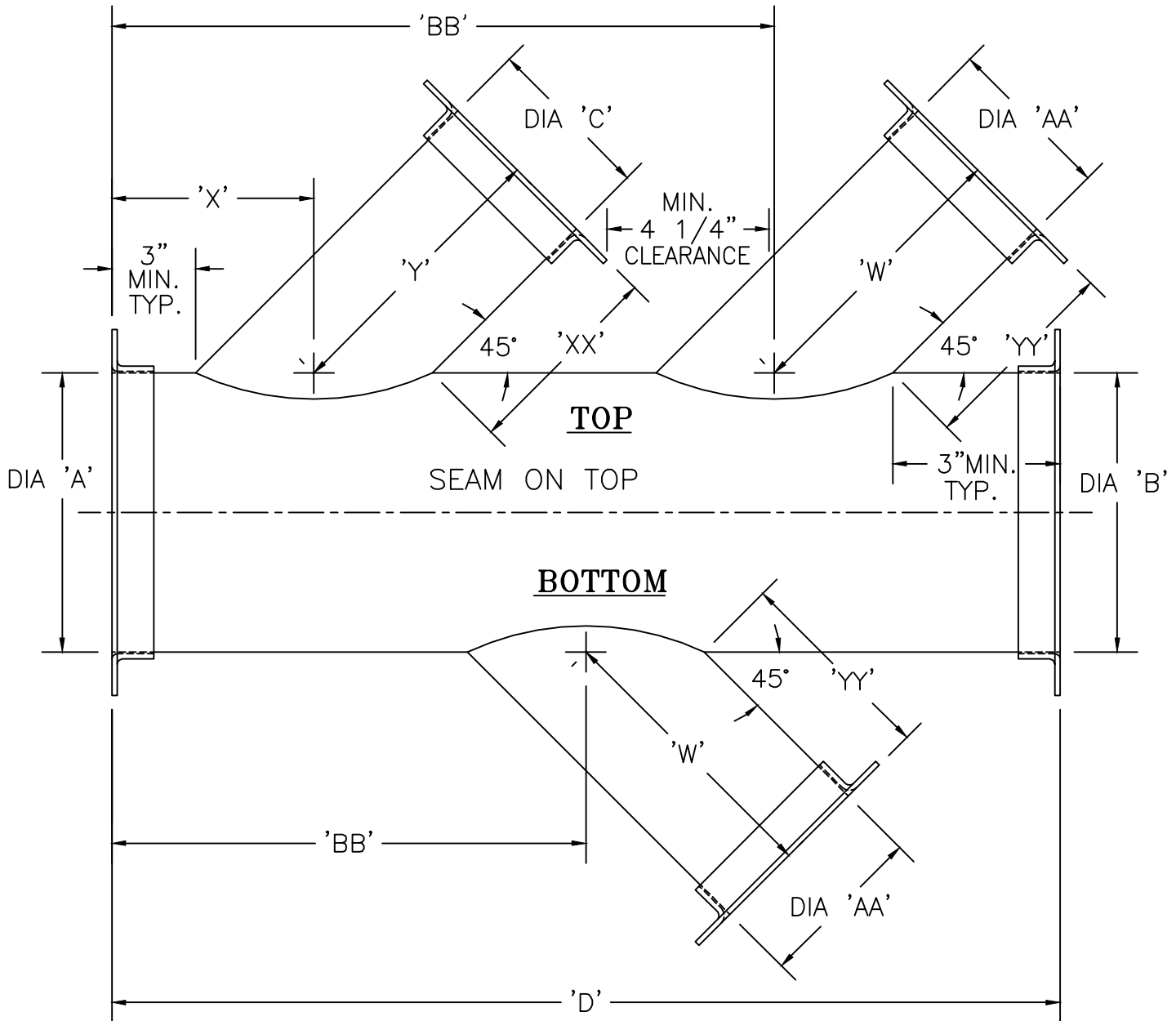


Kem-Tuff™
CORROSIVE AIR TRANSFER SYSTEMS

**Triple
Lateral -
Takeoff**

STANDARDS

TLAT 45



PLEASE NOTE *

- 1) WHEN USING ORDER SHEET, SPECIFY TOP DIMENSIONS IN FIRST ROW.
- 2) SPECIFY BOTTOM DIMENSIONS (WITH SAME DESIGNATION) IN SECOND ROW.
- 3) TOP & BOTTOM DIM'S WITH SAME LETTERS CAN BE DIFFERENT.
- 4) DIM 'BB' APPLIES SEPARATELY TO TOP & BOTTOM.
- 5) ALL 'TYPICAL' DIMENSIONS APPLY TO BOTH TOP AND BOTTOM.
- 6) IF 'B' = 'A', MIN. FOR 'D' = THE LONGER OF:

TOP: $((\text{'C'} + \text{'AA'}) \times 1.414) + 11.375 + (\text{'XX'} \times .707)$ OR BOTTOM: $(\text{'AA'} \times 1.414) + 6$

7) MAX. 'D' = 47" 6"Ø AND HIGHER;

MAX. 'D' = 36" 4"Ø

'Y' = $(1/2 \times \text{'C'}) + \text{'XX'}$

'W' = $(1/2 \times \text{'AA'}) + \text{'YY'}$

MIN. FOR 'Y' = $\text{'C'}/2 + 3-1/2$

MIN. FOR 'W' = $\text{'AA'}/2 + 3-1/2$