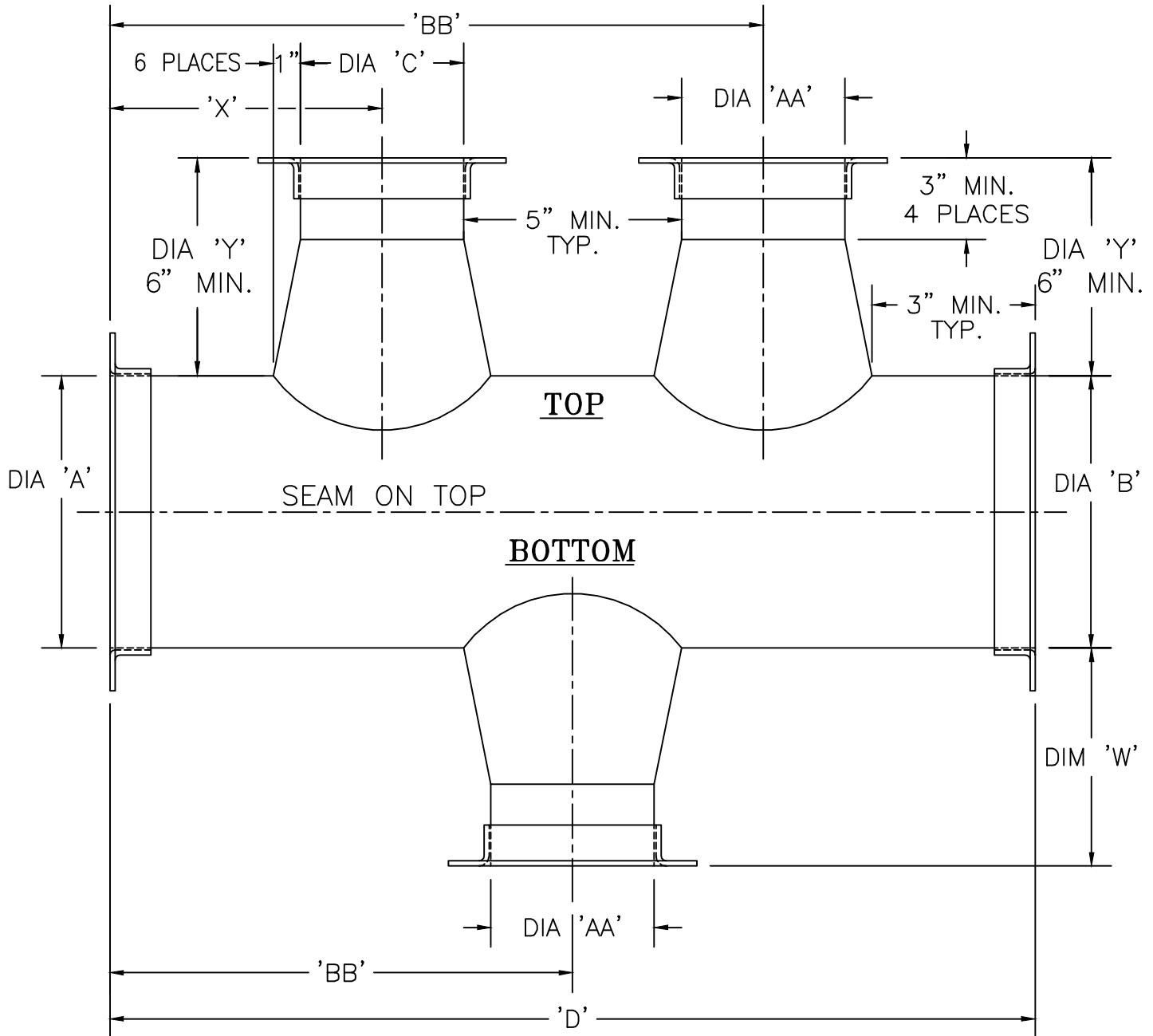


Kem-Tuff™ Triple Concentric - Takeoff

CORROSIVE AIR TRANSFER SYSTEMS

STANDARDS

TCTO



PLEASE NOTE

- 1) WHEN USING ORDER SHEET, SPECIFY TOP DIMENSIONS IN FIRST ROW.
- 2) SPECIFY BOTTOM DIMENSIONS (WITH SAME DESIGNATION) IN SECOND ROW.
- 3) TOP AND BOTTOM DIMENSION WITH SAME LETTERS CAN BE DIFFERENT.
- 4) DIM 'BB' APPLY SEPARATELY TO TOP AND BOTTOM.
- 5) ALL 'TYPICAL' DIMENSIONS APPLY TO BOTH TOP AND BOTTOM.
- 6) MAX. 'C' = 'A' - 4. IF HIGHER, GO TO 'TEE' OR 'LATERAL'
- 7) MAX. 'AA' = 'A' - 4. IF HIGHER, GO TO 'TEE' OR 'LATERAL'
- 8) MAX. 'D' = 47" 6 ϕ AND HIGHER; MAX. 'D' = 36" 4" ϕ
- 9) MAX. 'D' = THE LONGER OF; TOP: 'C' + 'AA' - 15, OR BOTTOM: 'AA' + 8.