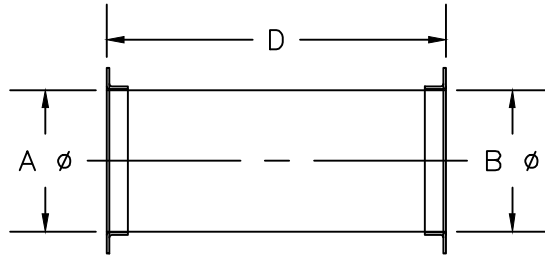




NOTE* When ordering, refer to SP STANDARDS sheet



Straight Pipe - SP

						CONNECTIONS* REFER TO LEGEND									
						STANDARD*		USE FOR NON-STANDARD FLANGES ONLY							
FITTING #	A ϕ	B ϕ	D	TP	DR	"A"	"B"	SPEC	I.D.	O.D.	B.C.	HOLE SIZE	# OF HOLES	REMARKS	
								"A"							
								"B"							
								"A"							
								"B"							
								"A"							
								"B"							
								"A"							
								"B"							

Pressure Class in w.g.	+	-	1	2	3	4	5	6	7	8	9	10	11	12	13	14	15	16
Company Name: _____ Contact Name: _____ Phone#: _____ Project Name: _____ Date: _____ Project #: _____ GDS Project #: _____								*CONNECTION LEGEND*										
								TYPE					MATERIAL					
								KF = NW-ISO-KF FB = FLAT BAR AR = ANGLE RING RAW = NO FLANGE					BI = BLACK IRON 304 = STAINLESS SPEC = FB 304 S.S. ONLY					
SPECIFY UNDER "CONNECTIONS" STD COLUMN: FLANGE TYPE AND MATERIAL, IF OTHER THAN STD 304 S.S.																		