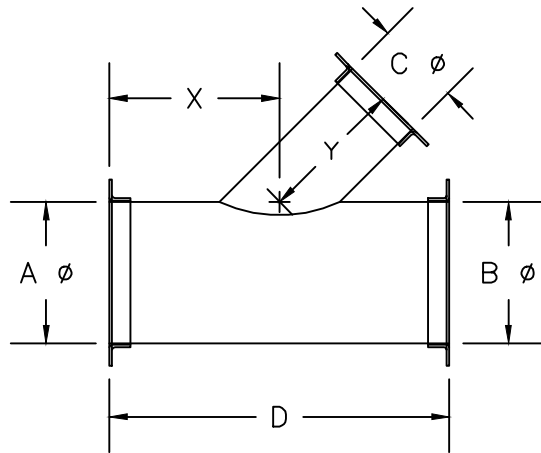




Kem-Tuff™
CORROSIVE AIR TRANSFER SYSTEMS

NOTE* When ordering, refer to LAT 45 STANDARDS sheet



Lateral Takeoff

- LAT 45

CONNECTIONS* REFER TO LEGEND

FITTING #	A ϕ	B ϕ	C ϕ	D	X	Y	STANDARD*			USE FOR NON-STANDARD FLANGES ONLY						REMARKS
							"A"	"B"	"C"	SPEC	I.D.	O.D.	B.C.	HOLE SIZE	# OF HOLES	
									"A"							
									"B"							
									"C"							
									"A"							
									"B"							
									"C"							
									"A"							
									"B"							
									"C"							

Pressure Class in w.g. + - 1 2 3 4 5 6 7 8 9 10 11 12 13 14 15 16

Company Name: _____
 Contact Name: _____ Phone#: _____
 Project Name: _____ Date: _____
 Project #: _____ GDS Project #: _____

CONNECTION LEGEND

TYPE	MATERIAL
KF = NW-ISO-KF	BI = BLACK IRON
FB = FLAT BAR	304 = STAINLESS
AR = ANGLE RING	SPEC = FB 304 S.S. ONLY
RAW = NO FLANGE	

STANDARD ELBOWS SHALL HAVE A MINIMUM CENTELINE RADIUS 1-1/2 TIMES THE DUCT DIAMETER WHENEVER POSSIBLE. HALF-RADIUS ELBOWS AVAILABLE UPON REQUEST.