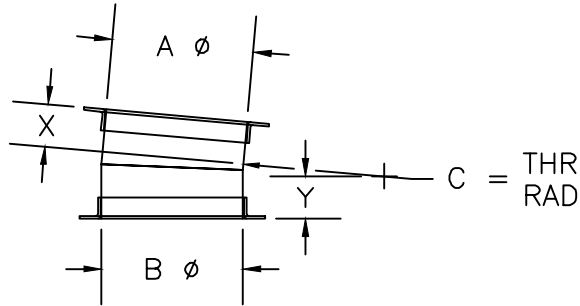




Kem-Tuff™
CORROSIVE AIR TRANSFER SYSTEMS

NOTE* When ordering, refer to EL5
2 Gore STANDARDS sheet



5° Elbow - 2 Gore

EL5

CONNECTIONS* REFER TO LEGEND

FITTING #	A ∅	B ∅	C	X	Y	STANDARD		USE FOR NON-STANDARD FLANGES ONLY						
						"A"	"B"	SPEC	I.D.	O.D.	B.C.	HOLE SIZE	# OF HOLES	
								"A"						
								"B"						
								"A"						
								"B"						
								"A"						
								"B"						
								"A"						
								"B"						

Pressure Class in w.g. + - 1 2 3 4 5 6 7 8 9 10 11 12 13 14 15 16

Company Name: _____
 Contact Name: _____ Phone#: _____
 Project Name: _____ Date: _____
 Project #: _____ GDS Project #: _____

CONNECTION LEGEND

TYPE	MATERIAL
KF = NW-ISO-KF	BI = BLACK IRON
FB = FLAT BAR	304 = STAINLESS
AR = ANGLE RING	SPEC = FB 304 S.S. ONLY
RAW = NO FLANGE	

STANDARD ELBOWS SHALL HAVE A MINIMUM CENTELINE RADIUS 1-1/2 TIMES THE DUCT DIAMETER WHENEVER POSSIBLE.
 HALF-RADIUS ELBOWS AVAILABLE UPON REQUEST.