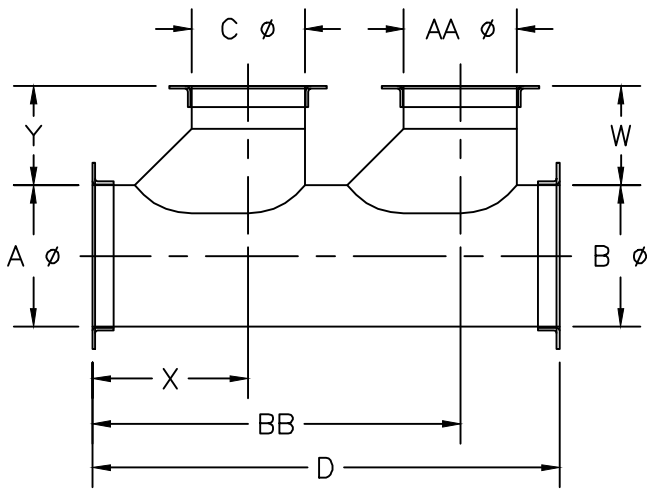




Kem-Tuff™
CORROSIVE AIR TRANSFER SYSTEMS

NOTE* When ordering, refer to DBTO STANDARDS sheet

Double 45° Takeoff - DBTO



										CONNECTIONS* REFER TO LEGEND											
										STANDARD*				USE FOR NON-STANDARD FLANGES ONLY							
FITTING #	A ϕ	B ϕ	AA ϕ	BB	C ϕ	D	W	X	Y	"A"	"B"	"AA"	"C"	SPEC	I.D.	O.D.	B.C.	HOLE SIZE	# OF HOLES	REMARKS	
														"A"							
														"B"							
														"AA"							
														"C"							
														"A"							
														"B"							
														"AA"							
														"C"							

Pressure Class in w.g.	+	-	1	2	3	4	5	6	7	8	9	10	11	12	13	14	15	16
------------------------	---	---	---	---	---	---	---	---	---	---	---	----	----	----	----	----	----	----

Company Name: _____
 Contact Name: _____ Phone#: _____
 Project Name: _____ Date: _____
 Project #: _____ GDS Project #: _____

CONNECTION LEGEND	
TYPE	MATERIAL
KF = NW-ISO-KF	BI = BLACK IRON
FB = FLAT BAR	304 = STAINLESS
AR = ANGLE RING	SPEC = FB 304 S.S. ONLY
RAW = NO FLANGE	

SPECIFY UNDER "CONNECTIONS" STD COLUMN: FLANGE TYPE AND MATERIAL, IF OTHER THAN STD 304 S.S.