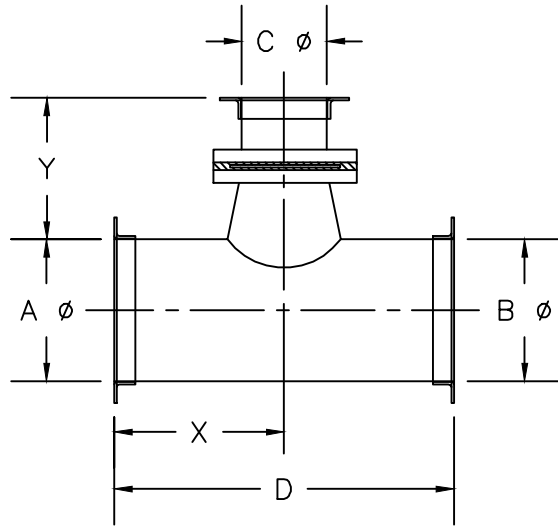




**Kem-Tuff™**  
CORROSIVE AIR TRANSFER SYSTEMS

NOTE\* When ordering, refer to CTBG STANDARDS sheet



# Conical Tee w/ Blastgate - CTBG

CONNECTIONS*			REFER TO LEGEND				
STANDARD*			USE FOR NON-STANDARD FLANGES ONLY				

FITTING #	A $\phi$	B $\phi$	C $\phi$	D	X	Y	STANDARD*			USE FOR NON-STANDARD FLANGES ONLY					REMARKS	
							"A"	"B"	"C"	SPEC	I.D.	O.D.	B.C.	HOLE SIZE		# OF HOLES
									"A"							
									"B"							
									"C"							
									"A"							
									"B"							
									"C"							
									"A"							
									"B"							
									"C"							

Pressure Class in w.g.	+	-	1	2	3	4	5	6	7	8	9	10	11	12	13	14	15	16
------------------------	---	---	---	---	---	---	---	---	---	---	---	----	----	----	----	----	----	----

Company Name: \_\_\_\_\_  
 Contact Name: \_\_\_\_\_ Phone#: \_\_\_\_\_  
 Project Name: \_\_\_\_\_ Date: \_\_\_\_\_  
 Project #: \_\_\_\_\_ GDS Project #: \_\_\_\_\_

*CONNECTION LEGEND*	
TYPE	MATERIAL
KF = NW-ISO-KF	BI = BLACK IRON
FB = FLAT BAR	304 = STAINLESS
AR = ANGLE RING	SPEC = FB 304 S.S. ONLY
RAW = NO FLANGE	

SPECIFY UNDER "CONNECTIONS" STD COLUMN: FLANGE TYPE AND MATERIAL, IF OTHER THAN STD 304 S.S.