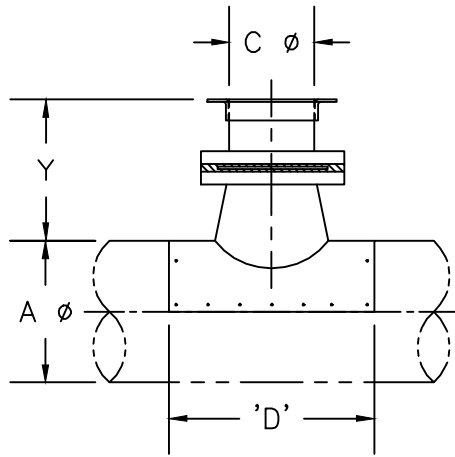




Kem-Tuff™
CORROSIVE AIR TRANSFER SYSTEMS

NOTE* When ordering, refer to CSTBG STANDARDS sheet



Conical Saddle Tap - CSTBG w/ Blastgate

CONNECTIONS*		REFER TO LEGEND				
STANDARD*	USE FOR NON-STANDARD FLANGES ONLY					
"C"	SPEC	I.D.	O.D.	B.C.	HOLE SIZE	# OF HOLES
	"C"					
	"C"					
	"C"					
	"C"					

FITTING #	A ϕ	C ϕ	D	Y	"C"	SPEC	I.D.	O.D.	B.C.	HOLE SIZE	# OF HOLES	REMARKS

Pressure Class in w.g.	+	-	1	2	3	4	5	6	7	8	9	10	11	12	13	14	15	16										
Company Name: _____ Contact Name: _____ Phone#: _____ Project Name: _____ Date: _____ Project #: _____ GDS Project #: _____										*CONNECTION LEGEND* <table border="1"> <thead> <tr> <th>TYPE</th> <th>MATERIAL</th> </tr> </thead> <tbody> <tr> <td>KF = NW-ISO-KF</td> <td>BI = BLACK IRON</td> </tr> <tr> <td>FB = FLAT BAR</td> <td>304 = STAINLESS</td> </tr> <tr> <td>AR = ANGLE RING</td> <td>SPEC = FB 304 S.S. ONLY</td> </tr> <tr> <td>RAW = NO FLANGE</td> <td></td> </tr> </tbody> </table>									TYPE	MATERIAL	KF = NW-ISO-KF	BI = BLACK IRON	FB = FLAT BAR	304 = STAINLESS	AR = ANGLE RING	SPEC = FB 304 S.S. ONLY	RAW = NO FLANGE	
TYPE	MATERIAL																											
KF = NW-ISO-KF	BI = BLACK IRON																											
FB = FLAT BAR	304 = STAINLESS																											
AR = ANGLE RING	SPEC = FB 304 S.S. ONLY																											
RAW = NO FLANGE																												
SPECIFY UNDER "CONNECTIONS" STD COLUMN: FLANGE TYPE AND MATERIAL, IF OTHER THAN STD 304 S.S.																												