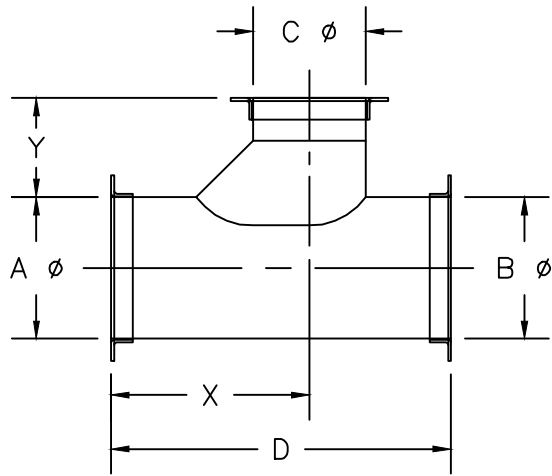




Kem-Tuff™
CORROSIVE AIR TRANSFER SYSTEMS

NOTE* When ordering, refer to BTO STANDARDS sheet



45° Takeoff - BTO

CONNECTIONS*			REFER TO LEGEND			
STANDARD*			USE FOR NON-STANDARD FLANGES ONLY			

FITTING #	A ϕ	B ϕ	C ϕ	D	X	Y	STANDARD*			USE FOR NON-STANDARD FLANGES ONLY				REMARKS	
							"A"	"B"	"C"	SPEC	I.D.	O.D.	B.C.		HOLE SIZE
									"A"						
									"B"						
									"C"						
									"A"						
									"B"						
									"C"						
									"A"						
									"B"						
									"C"						

Pressure Class in w.g.	+	-	1	2	3	4	5	6	7	8	9	10	11	12	13	14	15	16
------------------------	---	---	---	---	---	---	---	---	---	---	---	----	----	----	----	----	----	----

Company Name: _____
 Contact Name: _____ Phone#: _____
 Project Name: _____ Date: _____
 Project #: _____ GDS Project #: _____

CONNECTION LEGEND	
TYPE	MATERIAL
KF = NW-ISO-KF	BI = BLACK IRON
FB = FLAT BAR	304 = STAINLESS
AR = ANGLE RING	SPEC = FB 304 S.S. ONLY
RAW = NO FLANGE	

SPECIFY UNDER "CONNECTIONS" STD COLUMN: FLANGE TYPE AND MATERIAL, IF OTHER THAN STD 304 S.S.